

DEXIS™ IS 3700
Scanner tip usage guidelines

Easier Access Greater Comfort

The right tip for the right task

Not every part of a patient's mouth is easy to access, which may impact comfort for both the patient and the practitioner. That's why we created multiple tip style options for our intraoral scanners. Unlike other scanners that have a single large tip, ours offer you three ergonomic choices to satisfy different clinical needs and user and patient preferences.

We've prepared this document to help you understand the differences between the tips and the best way to use them in your practice. It is also important to consider ergonomics not only from the practitioner's perspective but also from that of the patient.



Normal tip

The standard or normal tip is ideal for general scanning and is similar to the tip design of other intraoral scanners on the market. It is the most common choice for customers who have used a different brand of scanner in the past.

If you prefer to hold the scanner closer toward the tip using a “pen grip,” then the normal tip is ideal.

Side tip

The side-oriented tip is shorter and flatter, which makes it easier to position in the patient’s buccal region.

Practitioners choose this tip for patients with thickened buccal mucosa or whose anatomy limits access to the buccal region.

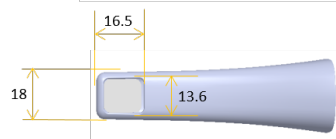
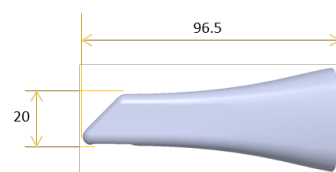
The side tip also allows you to hold the scanner at a different angle, which can lessen the stress on your wrist in challenging buccal and lingual scanning situations. Changing the tip can allow you to minimize repetitive wrist movement while scanning. This tip is a great option for those who prefer hold the scanner with a palm grip instead of a pen grip.

Posterior tip

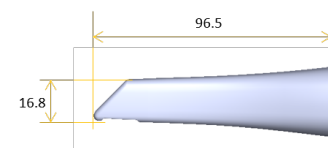
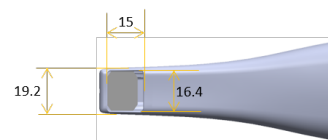
The posterior tip may improve patient comfort and provides better access when scanning tight spaces due to its short 14 mm tip height. The posterior tip is not for general scanning; rather, it should be used for specific regions in the mouth, such as distal molar surfaces, and for patients with limited bite openings, trauma, or TMJ. It also improves access to subgingival areas of the preparation.

The posterior tip is approximately the size of a turbine head without the bur in place. Most clinicians perform the initial scan with the standard or side-oriented tip and then change to the posterior tip to scan more challenging regions of interest.

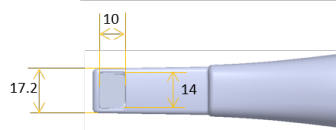
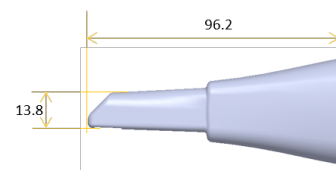
DEXIS IS 3700



Normal Tip (mm)



Side Tip (mm)



Posterior Tip (mm)

Cleaning the scanner tips in an automatic washer or disinfector

Begin by rinsing the tips. Use a soft brush and an enzymatic detergent solution (e.g., Metrex® EmPower™) to clean all surfaces. Do not use rubbing alcohol, as it may damage the tip.

Run the cycle as per the manufacturer's instructions. If the machine doesn't have an automatic rinse cycle, be sure to rinse the tips thoroughly in clean water to remove any detergent residue.

Use a lens or lint-free cloth to remove any dust from the mirror, as paper towel or other cleaning cloths can damage the lens. Fold a 4-ply sterile non-woven gauze sponge in half and using a cotton swab, carefully insert the folded gauze into the tip window. Ensure that the mirror is fully covered by the gauze. To facilitate removal, leave an edge of gauze outside the tip window.

Place the tip in an FDA cleared or CE mark sealed sterilization pouch. The pouch should be sealed air-tight. Use either a self-adhesive pouch or a heat-sealed pouch.



Fold 5 x 5 cm gauze in half



Insert folded gauze into tip



Sealed sterile pouch

Sterilizing the scanner tips

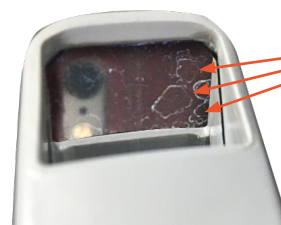
Scanner tips received from the manufacturer are NOT sterilized. You must sterilize the tips before the first use.

We have found you can autoclave the scanner tips up to 60 cycles if you wrap the tips in gauze and if the exposure in the autoclave is limited to 273°F /134°C for no more than 4 minutes. It is best for the tips to be dry when running through the autoclave.

Identifying worn scanner tips

If all settings are correct on the scanner and computer and you are experiencing some slowing of the scans, be sure to check the tip as it may have surface smudges, marks or scratches on the mirror which can affect scan speed. If this is the case, it is best to try a new tip.

The adhesive on the back of the mirrors will sometimes wear over time and can also affect scan speed. Note that mirror wear and distortion is not always visually identifiable.



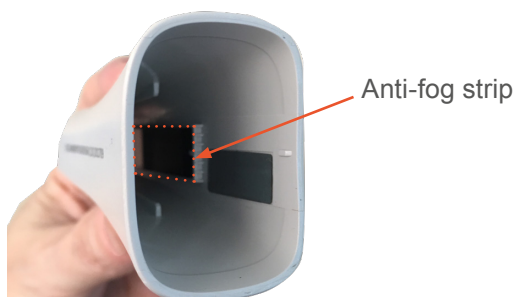
Mirror with surface smudge

(image enhanced for visibility)

Checking the metal anti-fog strip

For a fog-free scanning experience, tips typically take 60-90 seconds to warm when placed on the scanner. If you have waited the recommended time and the tip is still fogging up, check to see if the metal strip inside the tip is still present.

This strip is used to heat the mirror to prevent fogging. Occasionally the metal strip adhesive will wear and fall off after multiple sterilization cycles. If the metal strip is not present, select a new tip.



Ordering tips

The IS 3700 intraoral scanner comes with normal and side tips. Posterior tips and additional normal and side-oriented tips can be ordered from your DEXIS imaging dealer or sales representative.



Shown with side tip



Shown with normal tip

The products, equipment and services illustrated and described in this brochure reflect knowledge at the time of printing. Dental Imaging Technologies Corporation accepts no liability for any deviation from the illustrations in terms of color or shape, or any errors or print errors, and retains the right to make changes to the brochure at any time. Full or partial reprinting is only permitted with permission from Dental Imaging Technologies Corporation. For indications for use, please visit: [DEXIS.com](https://www.dexis.com)

Dental Imaging Technologies Corporation reserves the right to make changes to specifications and features shown herein, or to discontinue the product described at any time without notice or obligation. Contact your local authorized representative for the most current information. Manufactured by Dental Imaging Technologies Corporation, 450 Commerce Drive, Quakertown, PA 18951, USA.

© 2024 Dental Imaging Technologies Corporation. All rights reserved.
DXIST0122//Rev A. All trademarks are the property of their respective owners.



DEXIS | 450 Commerce Drive
Quakertown PA 18951 | USA
1-888-88-DEXIS

[DEXIS.com](https://www.dexis.com)